

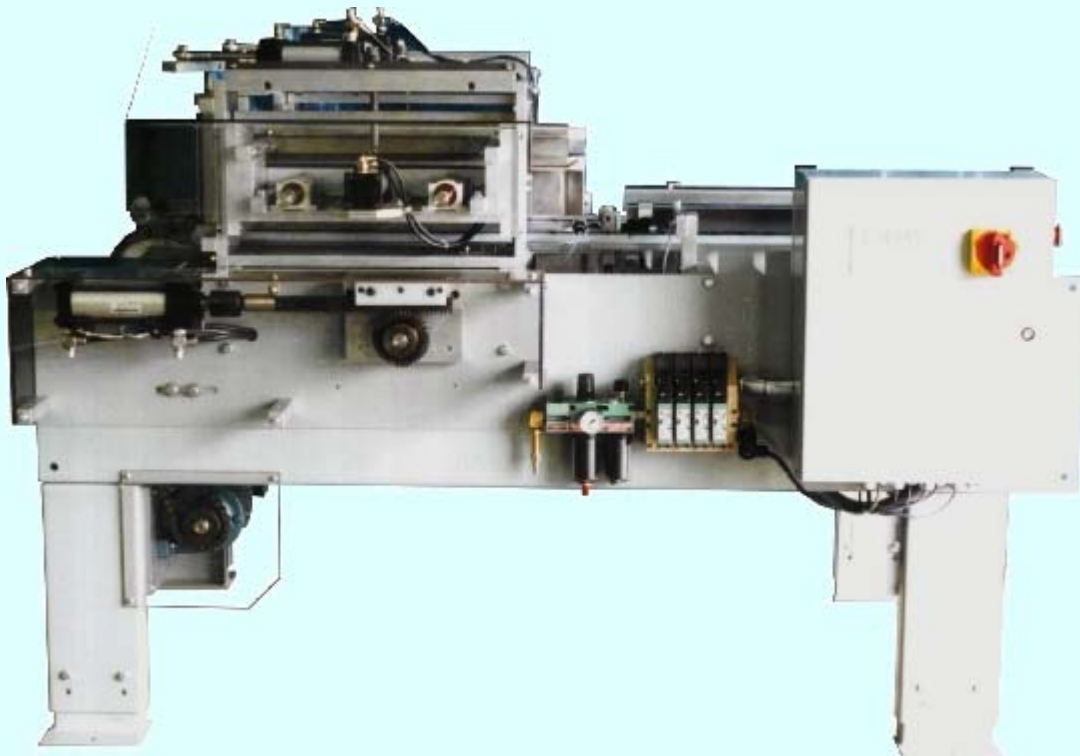
STABAN

ENGINEERING CORP.

Designers & Manufacturers of Machinery
Suppliers of Parts and Services



STABAN Model C01 Tray Stacker



STABAN Engineering Corp. Peripheral Equipment

Tray Stacker (for entry into shrink-wrapper)

Construction.....Formed Sheet Metal with Stainless, Plated, or UHMW Product Contact Parts.

Layout.....Designed for inline applications.

Speeds.....Up to 24 single trays per Minute (12 double tiered)

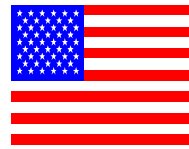
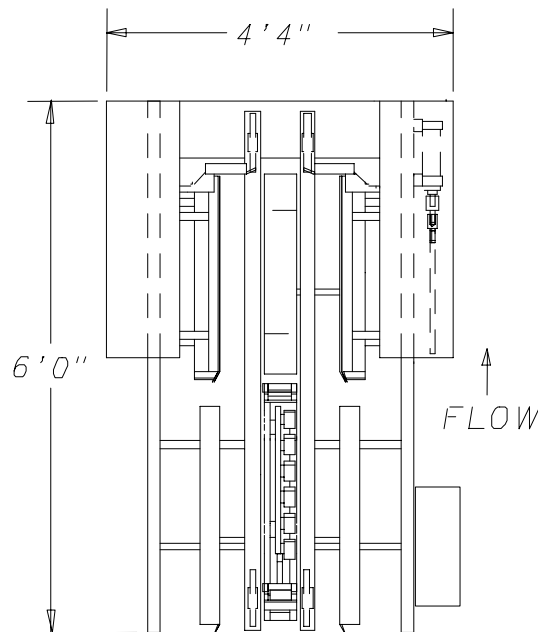
Controls.....Constant speed motor.

Guarding.....Polycarbonate and Sheet Metal Covers.

Lubrication.....Standard Grease Fittings.

Change Over.....**Approx. 5 -10 minutes.**

STABAN ENGINEERING MODEL C01 TRAY STACKER



Made in the U.S.A.

FLOOR PLAN AND SPECIFICATIONS

C01 TRAY STACKER SPECIFICATIONS

AIR - 1.5 CFM @ 80 PSI

ELECTRICAL - 1,000 WATTS.

PANEL - 4 AMP DROP AT 230 VOLTS.
2 AMP DROP AT 460 VOLTS.

TRAY STACKING - The C01 Tray Stackers, stack tray on tray, several sets per cycle. The infeed section provides an accumulation area, with detection, to provide for a multiple quantity of trays to be released into the lifting and stacking section. Groups of trays are released from the infeed while a gate style stopping arrangement holds back additional trays. The groups of trays enter the lifting and stacking section and actuate a detector. A pair of overhead shelves is retracted to permit the trays to raise above them. The shelves close under the lifted trays, holding them up, while the table returns down to permit another group of trays to enter. Once the 2nd group of trays is in the stacking section, the shelves open, and the previous layer drops a short distance onto the bottom layer. At this point a discharge gate system, which also serves to keep the stacked trays even, opens to allow them to exit. The cycle repeats automatically. The machine is fully adjustable for a range of tray sizes and varying height conditions.

STANDARD FEATURES - GENERAL

- | | |
|---|---|
| <input checked="" type="checkbox"/> Rugged, Formed Sheet Steel Frames. | <input checked="" type="checkbox"/> High/Low Level Detection (as required). |
| <input checked="" type="checkbox"/> Stainless, UHMW, & Plated Product Contact Parts. | <input checked="" type="checkbox"/> Photo Eye Jam Sensor. |
| <input checked="" type="checkbox"/> Gray TGIC polyester powder coat, electrostatically applied & baked on | <input checked="" type="checkbox"/> Polycarbonate Guards and Covers. |

Listed features and name brand components are current standards and subject to change