

STABAN

ENGINEERING CORP.

Designers & Manufacturers of Machinery
Suppliers of Parts and Services



MODEL U01 & U02 TURNERS

STABAN Engineering Corp. Peripheral Equipment

Tray & Case Turners with printing/coding area

Construction.....Formed Sheet Metal with Stainless, Plated, or UHMW Product Contact Parts.

Layout.....Designed for Lengthwise or Broadside Tray & Case Handling.

Speeds.....Up to 70 turns per Minute

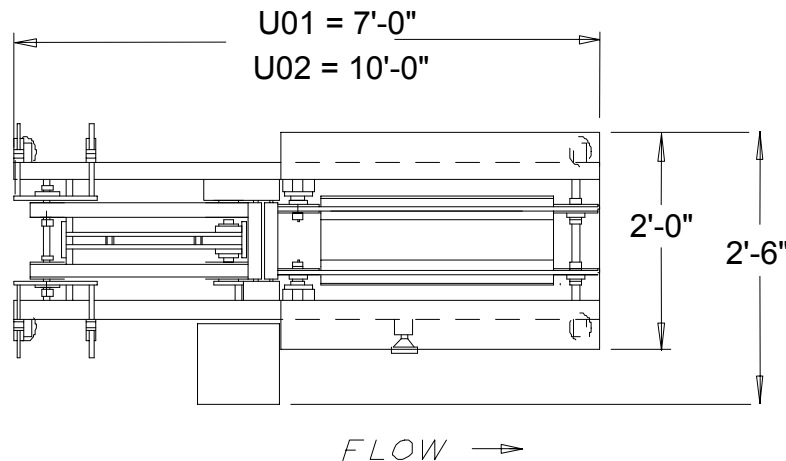
Controls.....A/B VFD for Turner overall speed controls.

Guarding.....Polycarbonate and Sheet Metal Covers.

Lubrication.....Standard Grease Fittings.

Change Over.....**Approx. 5 -10 minutes including most coders.**

STABAN ENGINEERING MODEL U01 & U02 TRAY & CASE TURNERS



FLOOR PLAN AND SPECIFICATIONS

U01 & U02 TRAY & CASE TURNER SPECIFICATIONS

AIR - NONE
 ELECTRICAL - 1,000 WATTS.
 PANEL - 4 AMP DROP AT 230 VOLTS.
 2 AMP DROP AT 460 VOLTS.

TRAY TURNING - STABAN Engineering Tray & Case Turners are available in 2 models, the U01, which is 7 ft. long, and the U02, which is 10 ft. Both machines can handle speeds up to 70 units per minute. The U02 has a longer infeed section for inspecting trays & cases for open flaps prior to the print heads. The longer U02 infeed belts are also desirable for printing longer trays & cases. STABAN turners are ideally suited for turning from length to width, after packing and printing, and before shrink-wrapping. Width to length turning can also be accommodated. Controls are minimal and include motor starter and variable frequency controller. The controller sets the overall operating speed. A pair of round, parallel belts, running at different speeds, provides the turning function. The second belt speed is an independent, mechanical pulley, adjustment.

STANDARD FEATURES - GENERAL

- | | |
|---------------------------------------------------------------------------------------------------------------------------------------------------------------------------------------------------------------------------------------------------------------------------------------------------------------------------------------------------|--------------------------------------------------------------------------------------------------------------------------------------------------------------------------------------------------------------------------------------------------------------------------------|
| <ul style="list-style-type: none"> <input checked="" type="checkbox"/> Rugged, Formed Sheet Steel Frames. <input checked="" type="checkbox"/> Stainless, UHMW, & Plated Product Contact Parts. <input checked="" type="checkbox"/> Gray TGIC polyester powder coat, electrostatically applied & baked on | <ul style="list-style-type: none"> <input checked="" type="checkbox"/> High/Low Level Detection (as required). <input checked="" type="checkbox"/> Photo Eye Jam Sensor. <input checked="" type="checkbox"/> Polycarbonate Guards and Covers. |
|---------------------------------------------------------------------------------------------------------------------------------------------------------------------------------------------------------------------------------------------------------------------------------------------------------------------------------------------------|--------------------------------------------------------------------------------------------------------------------------------------------------------------------------------------------------------------------------------------------------------------------------------|

U01 & U02 TURNERS

- A.C. Variable Frequency Drive.
- Mechanically Adjustable Turning Ratio.
- Side Print / Coding Area. (Coder is optional and quoted on request.)

Listed features and name brand components are current standards and subject to change